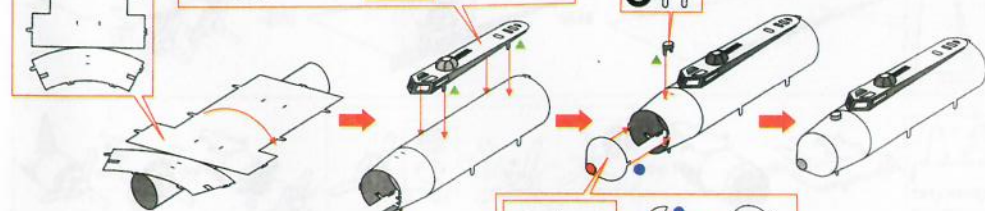
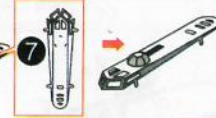
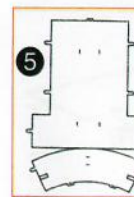
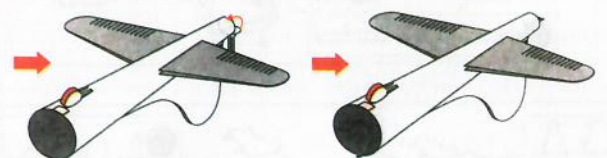
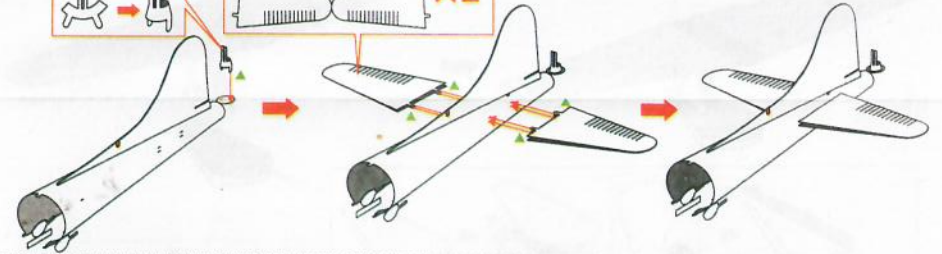
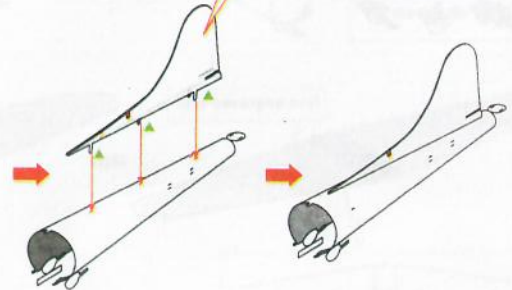
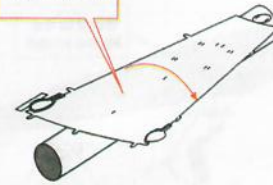
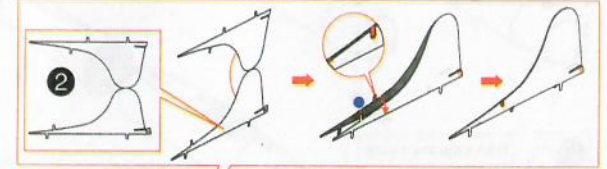
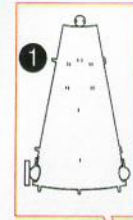
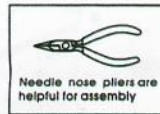
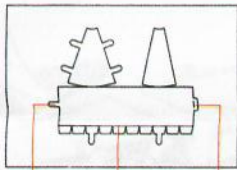


Assembly Flow Chart



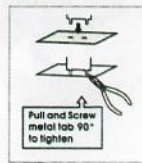
To create the best connections



Needle nose pliers are helpful for assembly

● Insert tab and bend 90 degrees for most visible areas

▲ Insert tab and twist 90 degrees is best in some areas to ensure a tight connection



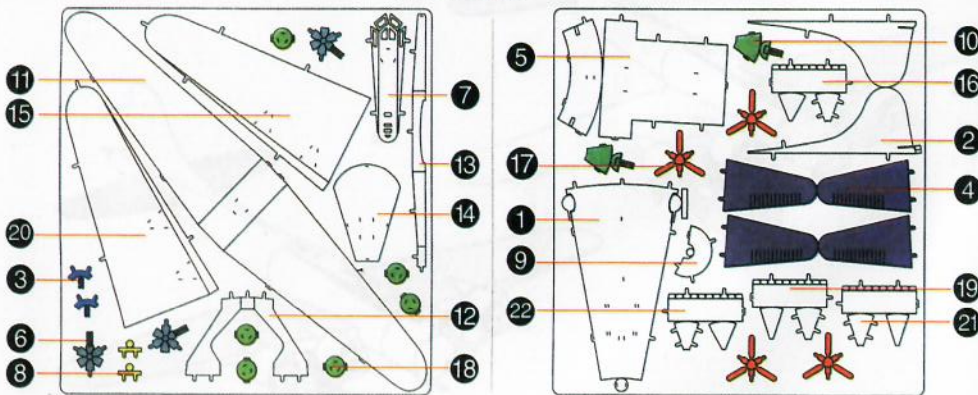
Pull and Screw metal tab 90° to tighten

Insertion tabs are inserted and then folded

Fold lines can be seen as shown here

Insertion holes

Metal sheets



⚠ In order to avoid possible injury from sharp edges, please carefully discard the metal sheet after parts have been removed

