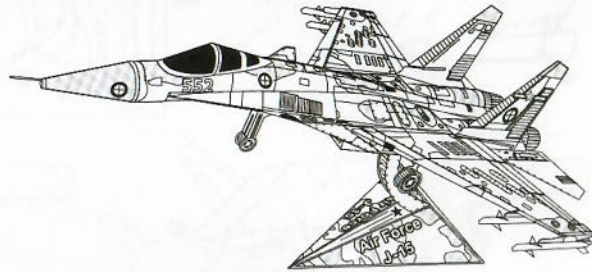


AIR FORCE J-15 / 空軍戰-15

3D METAL MODEL 3D金屬模型



CAUTION / 注意:

- Keep out of reach of children. 請放置于幼童接觸不到的地方。
- Warning, small parts. 請留意細小部件。
- Pay attention to sharp edges when removing pieces from the metal sheet. 取下零件時，請注意邊緣的銳點，避免劃傷。
- Carefully discard the metal sheet after parts have been removed. 零件取下後，小心處理剩餘金屬片。

Insertion tab 插頭



Fold line 彎折線

Insertion holes 插口

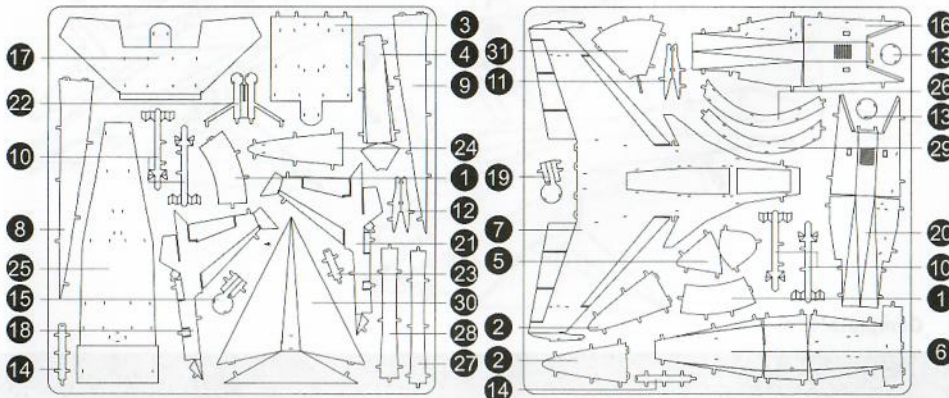
To create the best connections 建立穩固的連接的方法:

- Insert tab and bend 90 degrees for most visible areas
插頭穿過插孔後，將插頭最大限度地拉出，並平折成90度角。
- ▲ Insert tab and twist 90 degrees is best in some areas to ensure a tight connection
插頭穿過插孔後，將插頭作90度旋轉扭曲，可在某些部位形成緊密的連接。



Pull and Screw metal tab 90° to tighten
拖出插頭並扭轉鎖緊

Schematic drawing of sheet metals (two pieces of sheet metal)
金屬片示意圖 (有2片金屬)



ASSEMBLY METHOD: Follow assembly flow chart. 請按以下示意圖拼裝。

1 X2
先別彎折插頭
Do not bend the tab at this step

2 X2

3
插頭穿過插孔後平折90°
Bend the tabs to 90° after through the holes

4

5

6

7
插頭穿過插孔後平折90°
Bend the tabs to 90° after through the holes

8

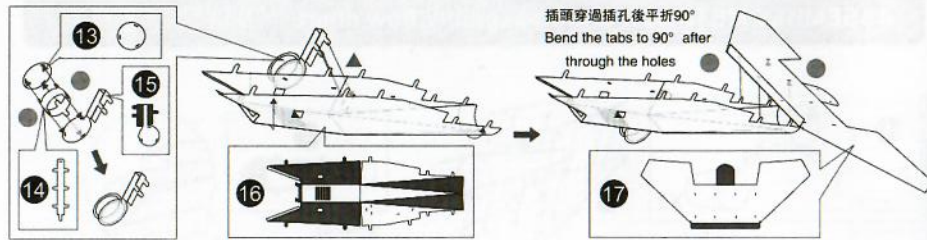
9

10 X2
先內側插銷不折彎，直接穿過插孔；
後外側插銷平折90°，再裝入插孔。
A. Keep the inner side tabs flat and get through the holes directly;
B. Bend the outer side tabs to be 90°, and fix to the holes at the same side.

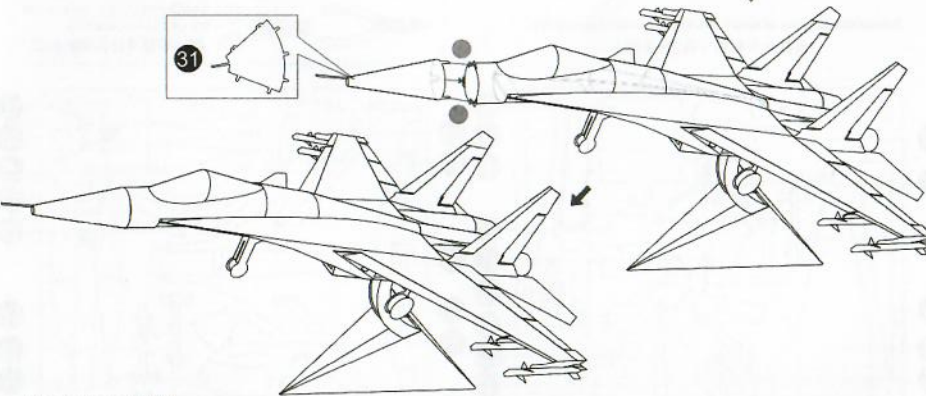
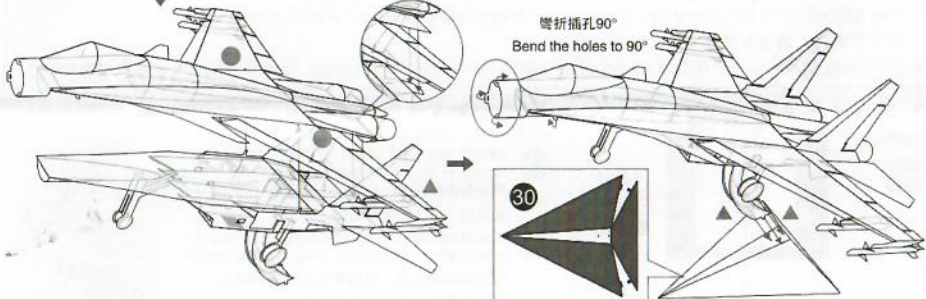
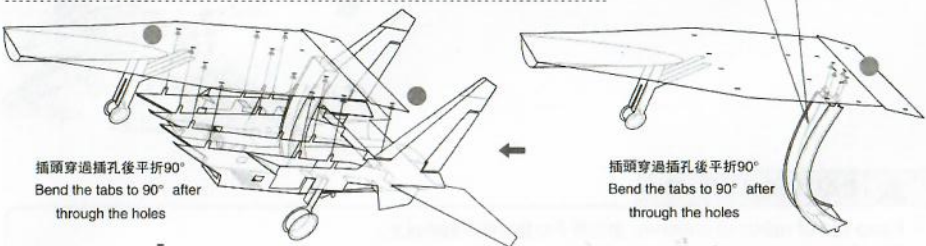
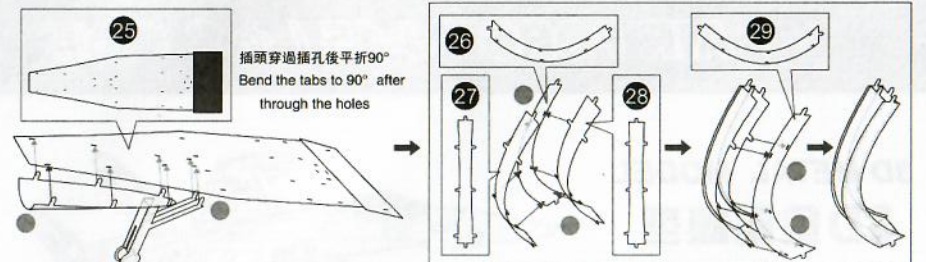
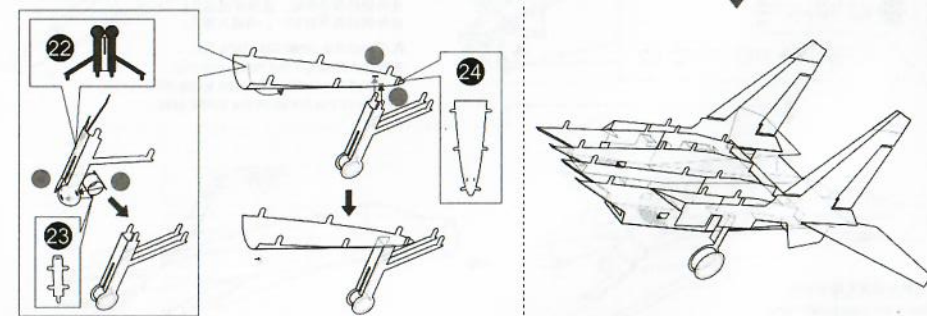
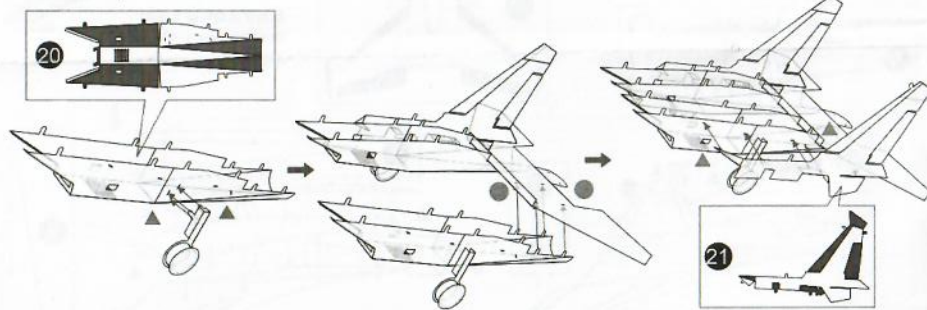
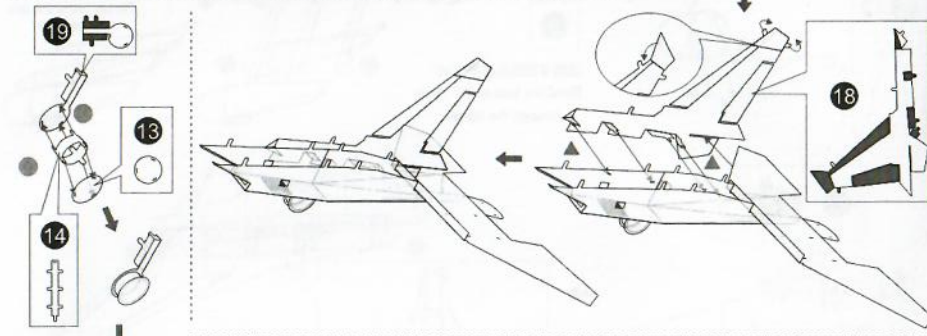
11

12

插頭穿過插孔後平折90°
Bend the tabs to 90° after through the holes



插頭穿過插孔後平折90°
Bend the tabs to 90° after
through the holes



Complete/ 完成