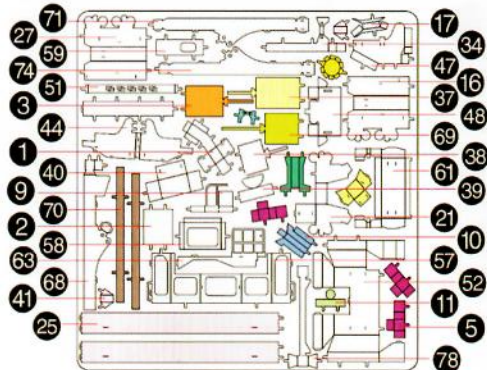
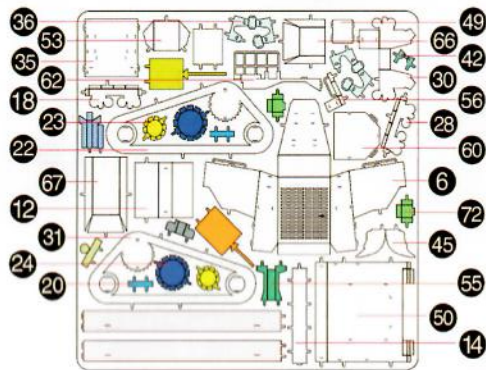
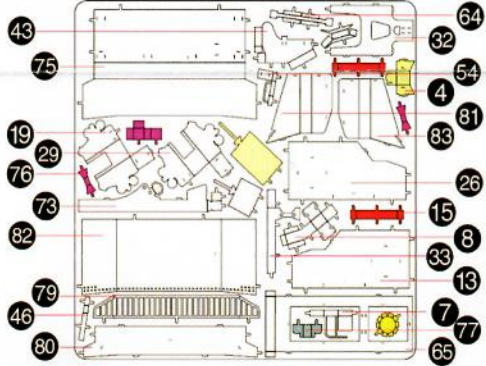


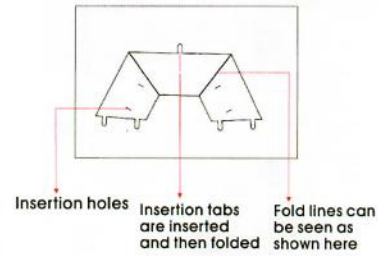
Dozer

360°
view

Metal sheets



In order to avoid possible injury from sharp edges, please carefully discard the metal sheets after parts have been removed



Legends:

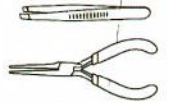
- Engraved side
- Non-engraved side
- Attention point
- Insert tab and bend 90 degrees
- Insert tab and twist 90 degrees

Recommended tools:

-Wire cutters: helpful for taking parts from the metal sheets.



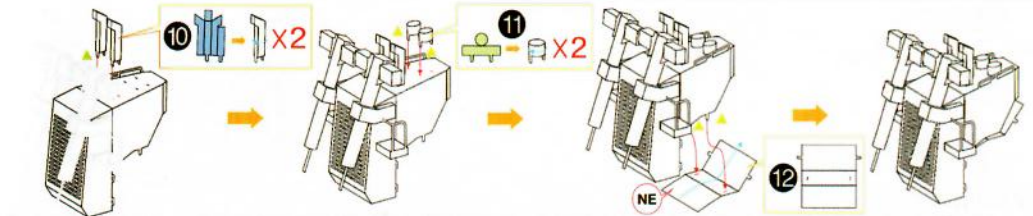
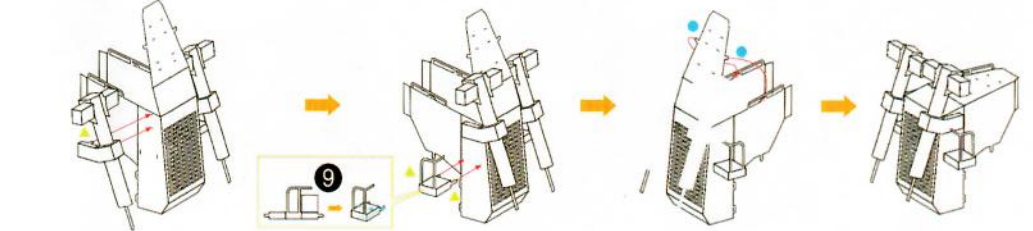
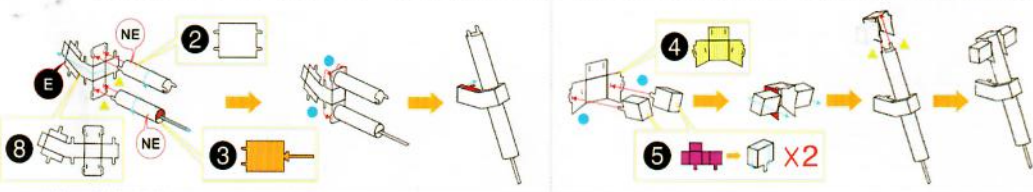
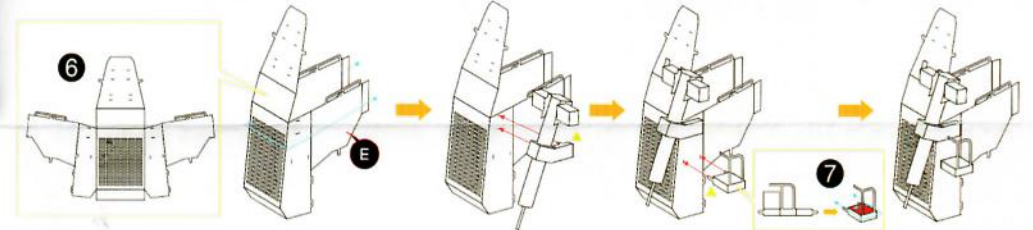
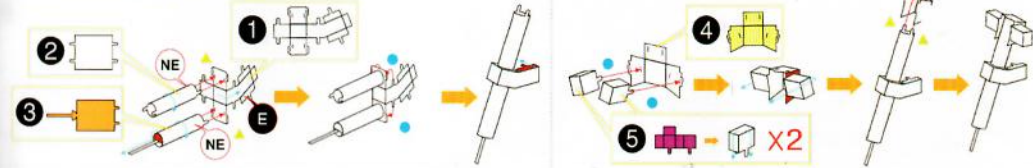
-Tweezers or needle nose pliers: helpful for folding parts, bending and twisting tabs.

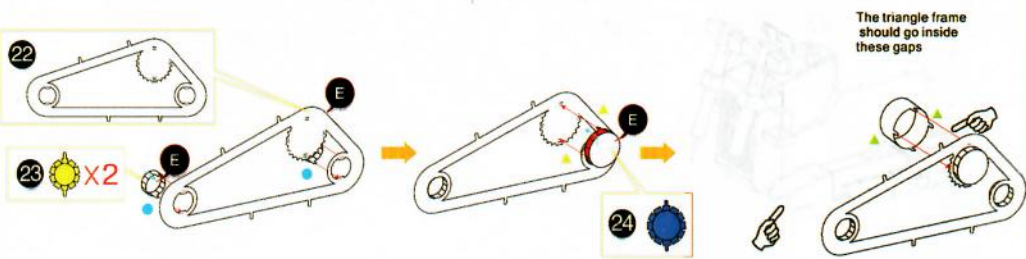
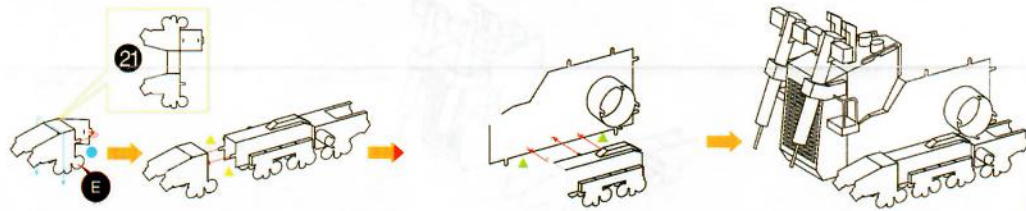
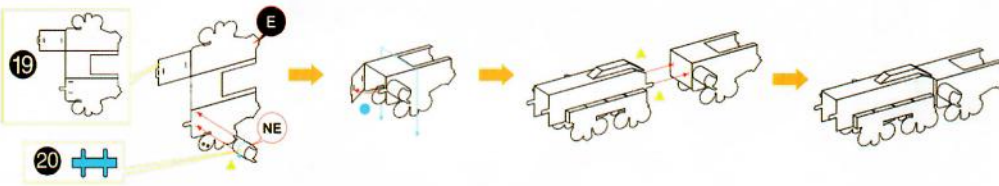
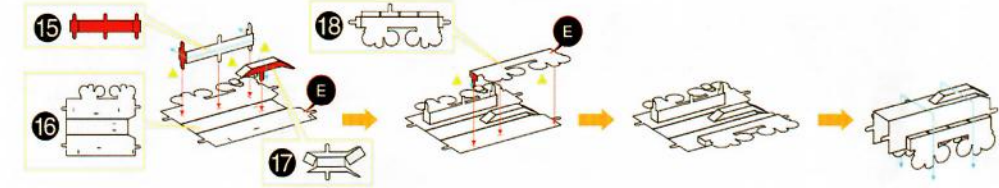
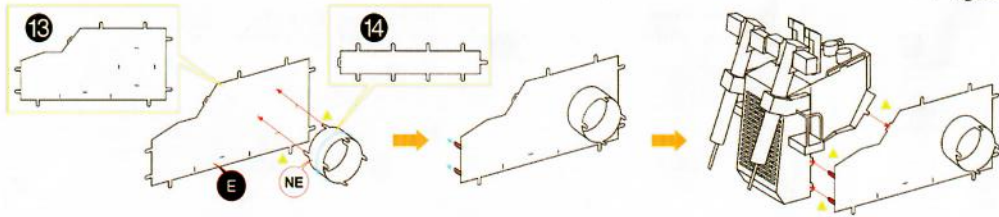


Assembly tip:

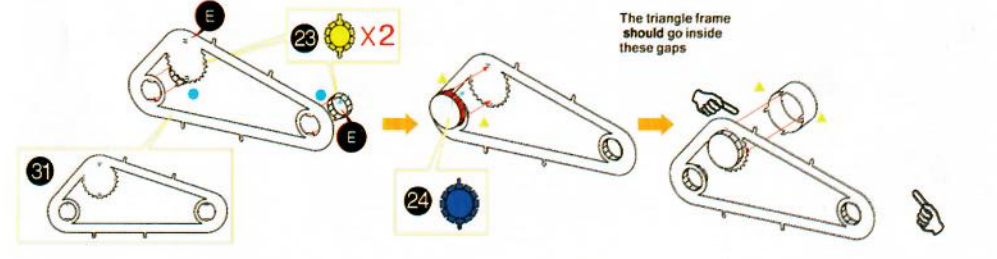
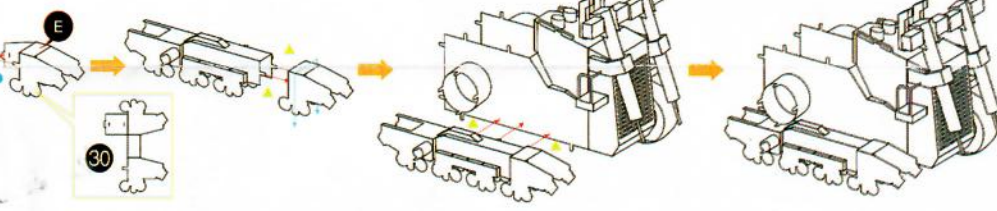
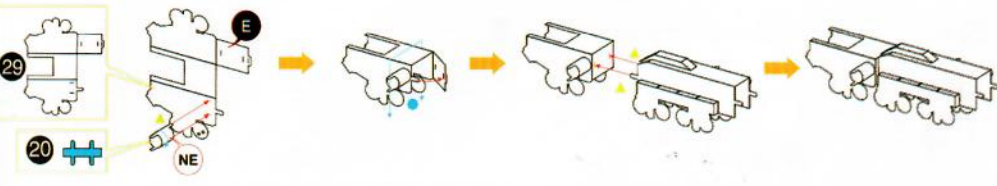
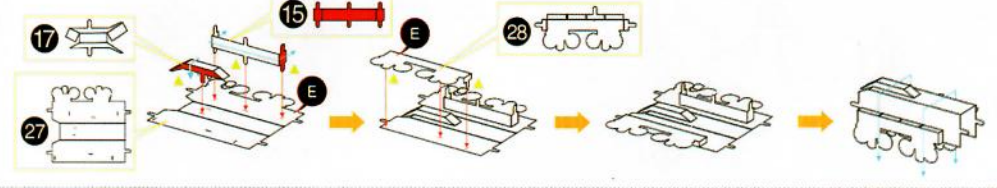
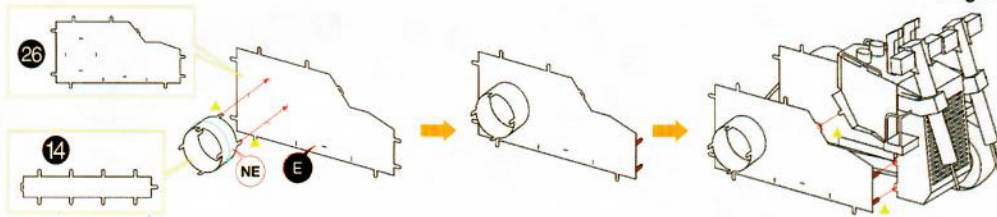
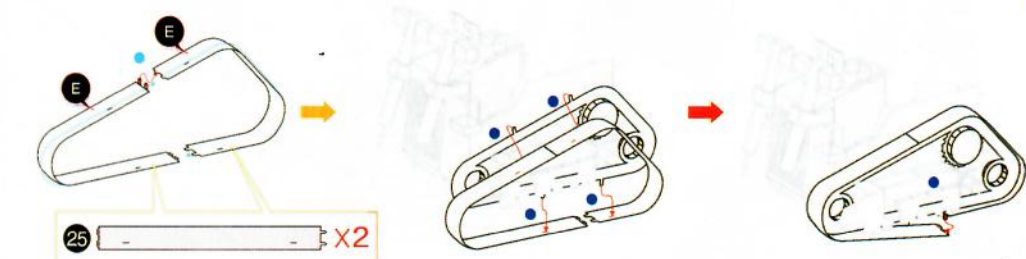
If needed, slightly twist tabs to hold parts together then untwist and bend them down for a nice finish

Assembly Flow Chart





The triangle frame should go inside these gaps



The triangle frame should go inside these gaps

